



## 东莞市超骏齿轮有限公司

DongGuan ChaoJun Gear Co.,Ltd.

## COMPANY PROFILE

### 企业简介

东莞市超骏齿轮有限公司前身为深圳超骏齿轮有限公司，创立于1995年；多年的生产技术经验和雄厚的软硬件支持，提供专业的研发，提供精密传动系统解决方案的技术型企业。工厂现位于经济发达，交通便利且有中国最美小镇之称的东莞清溪。超骏拥有一只资深的高级工程师和业内资深工模技术人员组成的团队为世界各地的客户提供传动方案设计，精密模具制造，各类零件生产，零部件喷涂外观加工服务及齿轮箱和成品组装等一站式服务。

企业通过ISO9001体系认证，正在推行ISO16949管理体系。公司重视自主开发以及与客户加强合作研发的智能化家居，智能机器人核心驱动系统，医疗水泵，电子驻车系统，各式打印机核心齿轮箱和消费级电子产品传动系统，在噪音，精密等关键参数处于行业领先水平。和各行业领先品牌建立长期战略合作关系。

超骏齿轮拥有200余台以日本东芝，中国海天为主的大中小吨位成型注塑机，SODICK线切割，SODICK电火花机，FANUC等高精度加工设备。品质实验室拥有多种原料检测设备，数台三次元及其他检测设备为品质护航。成品组装拥有8条成品组装产线（包含精密牙箱组装线），多条喷涂塑胶线及五金线（两条十万级无尘喷涂），可喷涂UV，数十台双色/四色移印机，多台全自动油漆点胶机，经过20年的技术沉淀，完善一站式服务，铸就了智能传动行业的领先品牌。

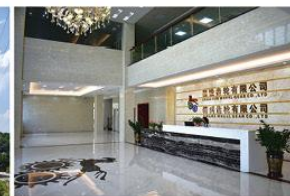
Dongguan super steel Gear Co., Ltd. is the predecessor of Shenzhen super steel Gear Co., Ltd., founded in 1995, years of production technology experience and strong soft and hardware support, is a professional research and development, providing precision transmission system solutions of technical enterprises. The factory is located in the Dongguan Qingxi, which is economically developed, convenient and the most beautiful town in China. Super Jun has a team composed of senior senior engineers and senior industry technicians to provide transmission scheme design, precision mould manufacturing, various parts production, spare parts injection for customers all over the world. One-stop service such as appearance processing service, gear box and finished product assembly.

Through ISO9001 system certification, enterprises are implementing ISO16949 management system. The company attaches great importance to the independent development and the intelligent home, the core driving system of the intelligent robot, the medical pump, the electronic parking system, the core gear box of the printer and the transmission system of the consumer electronic products, and the leading level in the industry with the key parameters such as noise and precision. Establish long-term strategic cooperative relationship with leading brands in various industries.

The super - steel gear has more than 200 high precision processing equipment, such as Japanese Toshiba, China Sea Sky main medium and small tonnage molding machine, SODICK wire cutting machine, SODICK electric spark machine, FANUC and so on. Quality laboratory has a variety of raw materials testing equipment, several three yuan and other testing equipment for quality escort. The finished product assembly has 8 finished product assembly lines (including the precision tooth box assembly line), multiple spray plastic wire and hardware line (two one hundred thousand dust-free spraying), can spray UV, dozens of double color / four color printing machine, multiple automatic paint dispenser, after 20 years of technical precipitation, finished good one station service, cast the intelligent transmission industry The leading brand.



超骏科技园大门 ChaoJun Science Park Gate



工程师办公室 Engineer Office



## 模具制造能力

## Tooling Manufacturing Capability

超骏齿轮模具团队拥有SODICK线切割机、SODICK电火花机、FANUC等高精度加工设备。品质检测室拥有多种原料检测设备，数台三次元及其他检测设备为品质护航。成品组装拥有8条成品组装产线，多条喷涂塑胶线及五金线(两条十万级无尘喷涂)，可喷UV，数十台双色/四色移印机，多台全自动油漆点胶机。

ChaoJun tooling team has decades experience in precision tooling development, design and fabrication with advanced equipments like SODICK wire cutting machines, SODICK EDM, FANUC CNC machines. Resin laboratory includes multiple inspection equipments. 8 product assembly lines, several dust-free spray lines for plastic product and metal product, UV available, dozens of 2color/4color pad printer machine, several automobile paint dispenser machine.



◆ 名称：CNC数控机床 CNC machine tool  
◆ 品牌：发那科 FANUC  
◆ 产地：日本 Made in Japan  
◆ 加工精度：±0.005mm



◆ 名称：CNC EDM  
◆ 品牌：沙迪克SODICK  
◆ 产地：日本 Made in Japan  
◆ 加工精度：±0.005mm



◆ 名称：线切割 WEDM  
◆ 品牌：沙迪克SODICK  
◆ 产地：日本 Made in Japan  
◆ 加工精度：±0.005mm



◆ 名称：CNC放电机 CNC EDM  
◆ 品牌：台正  
◆ 产地：台湾 Made in TaiWan  
◆ 加工精度：±0.005mm



◆ 模具仓库 Tool Warehouse



◆ 模具组装机 Tool Assemble



◆ CNC车间 CNC Workshop

## 精密注塑成型能力

## Precision injection capability



◆ 中国海天注塑机 HaiTian injection machine



◆ 日本东芝注塑机 TOSHIBA injection machine



◆ 无尘车间内部 Internal of dust-free workshop



◆ 透明产品外观检查  
Visual check transparent product



◆ 无尘车间更衣区域  
Locker of dust-free workshop

拥有东芝，海天等大中型各类注塑成型加工设备200余台  
More than 200 injection machines from TOSHIBA and HAITIAN



◆ 东芝注塑车间，全机械手自动化生产 Toshiba injection workshop; automatic production



◆ 大中型机台以海天注塑机为主，为质量护航 Haitian injection workshop



◆ 中央供料系统，自动化生产 Central feeding system; automatic production



## 精密注塑成型能力 Precision injection capability



◆ 中国海天注塑机 HaiTian injection machine



◆ 日本东芝注塑机 TOSHIBA injection machine



◆ 无尘车间内部 Internal of dust-free workshop



◆ 透明产品外观检查  
Visual check transparent product



◆ 无尘车间更衣区域  
Locker of dust-free workshop

拥有东芝，海天等大中型各类注塑成型加工设备200余台  
More than 200 injection machines from TOSHIBA and HAITIAN



◆ 东芝注塑车间，全机械手自动化生产 Toshiba injection workshop; automatic production



◆ 大中型机台以海天注塑机为主，为质量护航 Haitian injection workshop



◆ 中央供料系统，自动化生产 Central feeding system; automatic production

## 品质检测设备

## Quality testing equipments



材料实验室设备一角 Resin Test Corner

◆ 熔融指数测试仪 Melt flow indexer

◆ 塑胶水分仪 Plastic moisture indexer

◆ DSC测试仪 DSC tester



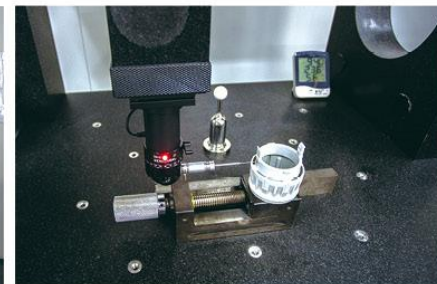
- ◆ 仪器名称：齿轮啮合仪  
OASKA Gear Test Center
- ◆ 品牌：日本大坂制造 Made in Japan
- ◆ 测量模数Accuracy：0.20~1.00



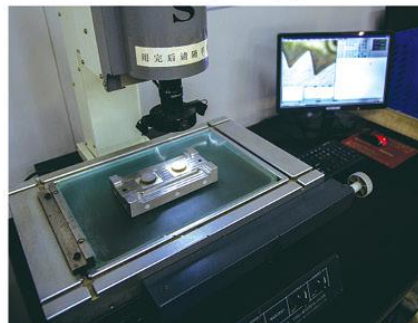
- ◆ 仪器名称：齿轮跳动仪 Gear runout meter
- ◆ 品牌：上海量具制造
- ◆ 测量模数Accuracy：0.3~2.0



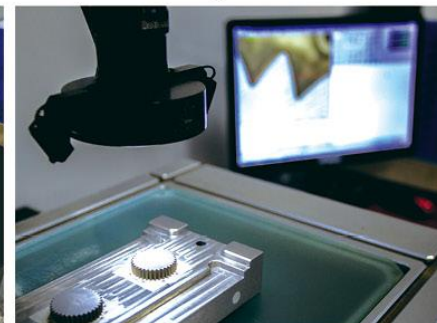
◆ 使用2次元检测中 Measuring with 2D projector



◆ 使用3次元检测中 Measuring with CMM



◆ 检测模具组件 Measuring mold component





## 品质检测设备

## Quality testing equipments



- ◆ 仪器名称：三次元 CMM
- ◆ 品牌：韩国德仁
- ◆ 精度 Accuracy：0.001mm



- ◆ 仪器名称：二次元 2D measuring projector
- ◆ 品牌：源兴仪器制造
- ◆ 精度 Accuracy：0.001mm



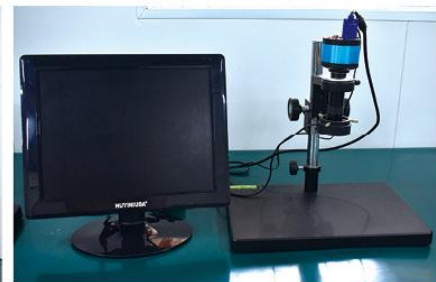
- ◆ 仪器名称：洛氏硬度计  
Rockwell hardness tester
- ◆ 品牌：深圳艾尔玛
- ◆ 精度 Accuracy： $\pm 0.5^\circ$



- ◆ 仪器名称：橡胶拉力试验机  
Rubber tensile pressure tester
- ◆ 品牌：科讯精密仪器制造
- ◆ 精度 Accuracy： $\pm 0.10\%$



- ◆ 仪器名称：二次元 2D measuring projector
- ◆ 品牌：源兴仪器制造
- ◆ 精度 Accuracy：0.001mm



- ◆ 仪器名称：高清放大镜 High definition magnifier
- ◆ 品牌：视维德
- ◆ 精度 Accuracy：30倍



- ◆ 仪器名称：单面立式平衡机 Dynamical balancing machine
- ◆ 品牌：华顺电机制造
- ◆ 精度 Accuracy： $\leq 0.4g \cdot mm/kg$



- ◆ 仪器名称：摆锤式冲击试验机 Pendulum-impact tester
- ◆ 品牌：美特斯工业系统中国制造
- ◆ 精度 Accuracy：0.1%>

## 喷油事业部 Spraying Department



◆ 移印车间  
Pad Print Workshop



◆ 十万级无尘喷涂塑胶线  
Dust-Free Spray Plastic Line



◆ 五金无尘喷涂线：大型设备零件  
Dust-Free Spray Metal Line: Metal Part



◆ 全自动油漆点胶机  
Automatic Dispenser Machine



◆ 全自动油漆点胶机  
Automatic Dispenser Machine



◆ 五金线收货及目检  
Product Collect and Visual inspection



◆ 五金无尘喷涂线：显卡金属外壳  
Dust-Free Spray Metal Line: Video Card Metal Case



◆ 无尘喷涂线内部  
Internal of Dust-Free Workshop



◆ 包装线  
Packaging Line



◆ 无尘自动喷涂车间：上货区  
Dust-Free Plastic Automatic Spray Line: Put Products on Fixture



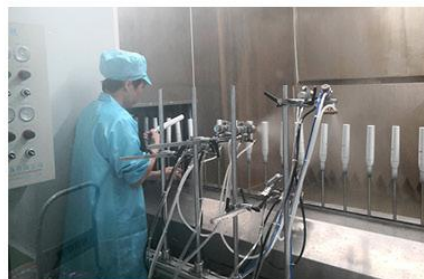
◆ 无尘自动喷涂车间：下货区  
Dust-Free Plastic Automatic Spray Line: Take down Finished products



◆ 无尘自动喷涂车间：底油喷房  
Dust-Free Plastic Automatic Spray Line: Undercoat Spray Area



◆ 无尘自动喷涂车间：目检  
Dust-Free Plastic Automatic Spray Line: Visual Check



◆ 无尘自动喷涂车间：UV 喷房  
Dust-Free Plastic Automatic Spray Line: UV Line



◆ 检测设备：耐摩擦试验机，灯箱，酒精 / 牙膏水 / 漱口水等化学试剂（根据客户产品要求）  
Test equipments: Friction testing machine, light box, Alcohol kit/ Toothpaste kit/ Mouth water kit (According product testing requirements)



精密齿轮箱 & 成品装配事业部

Gear Box &  
Finished Product Assembly Department



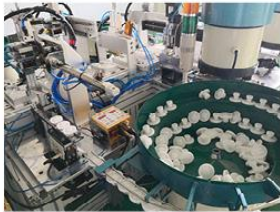
◆ A 组装车间（十条手工线）  
Assembly Workshop A (Ten manual Lines)



◆ B 组装车间（四条手工线）  
Assembly Workshop B (Four Manual Lines)



◆ 自动装配  
Automation Line

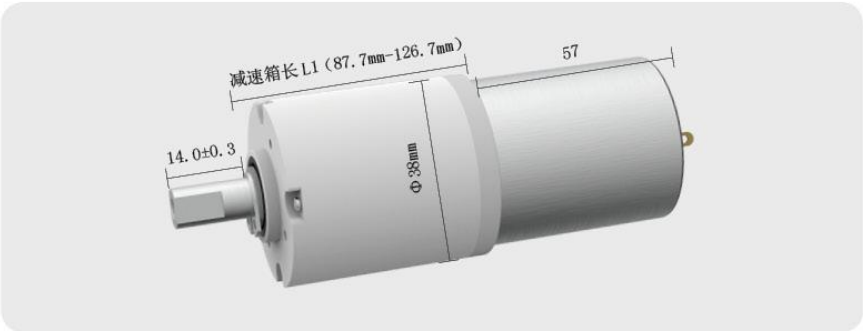


◆ 自动装配线局部  
Partial of Automation Line

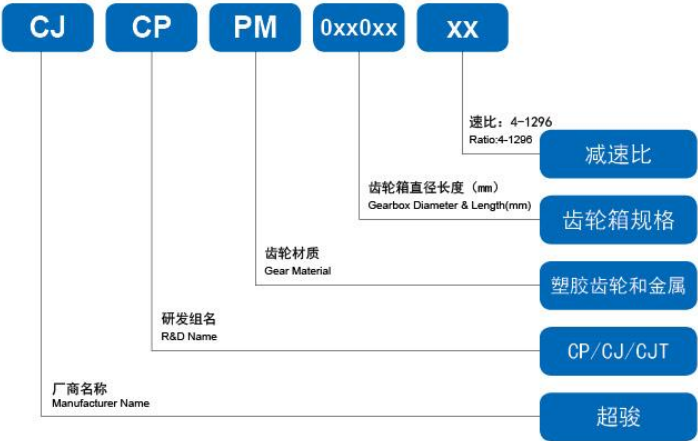


我们提供标准减速齿轮箱电机和定制服务  
We offer standard reduction gear motor and customized service

- 小尺寸
- 寿命长
- 大力矩
- 低噪音
- 高效率



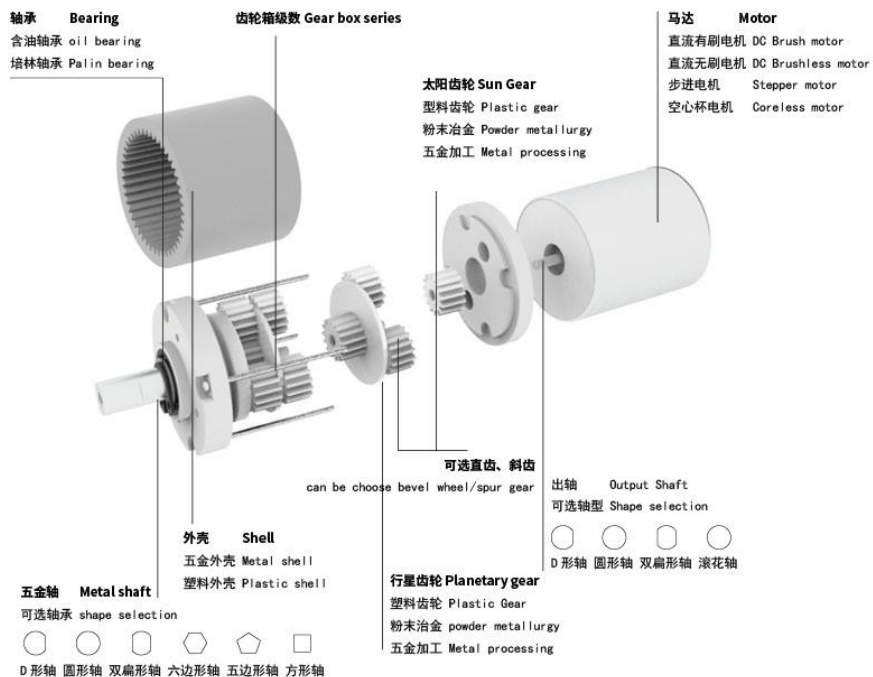
超骏减速电机产品命名规则  
ChaoJun Gear Motor Product Naming Scheme





## 超骏行星电机分解图

### ChaoJun Planetary Motor Breakdown Drawing



减速齿轮箱广泛应用于汽车部件，智能家居设备，厨卫电器，电动工具，医疗器械，通讯器材，工业设备，仪器仪表，航模，机器人，个人护理设备，安防摄像设备等多个行业，可根据客户的不同应用场景要求定制。

Reduction gear motors were widely used in multiple industries, such as motor parts, smart home equipments, kitchenware power tool, medical apparatus, communication devices, industry equipments, models, robot, personal healthcare devices, security camera devices, etc. Except offering standard gearbox, we also customized the whole gearbox system depend on requirements of application environments.

## 合作伙伴 Partners



## 行业案例 Business case



### 电动工具(Power tool)



电动工具精密传动件/Precision transmission part  
传动部分配合尺寸之精准;工程塑料的高强度, 耐冲击耐疲劳  
The parts of transmission part need precision clearance; apply engineering plastic resin with high strength, shock resistance, fatigue resistance

1. 传递动力大, 效率高/transfer strong, efficient power
2. 寿命长, 工作平稳, 可靠性高/long life, works stable, reliable
3. 能保证恒定的传动比, 能传递任意夹角两轴间的动力  
keep stable transmission ratio, able transfer power of any angle between two axes

## 小家电(Kitchenware)



## 行星齿轮牙箱(Personal healthcare devices)





## 行业案例 Business case

### 按摩产品(Massage Product)



颈部按摩器要求噪音低，静音，大扭矩力齿传动机构  
Neck massager require low noise, strong transmission part with strong torque  
项目成效：延长使用寿命，降低噪音，最大限度降低仿真人按摩曲线失真。  
Project results: Compared with old product; extend life time, lower noise, minimized the potential of lose simulated massage efficacy.

### 智能扫地机器人(Smart vacuum cleaning robot)



精密扫地机轮胎牙箱组件：防尘，扭矩大，噪音低，实现复杂地形行走  
Customized clean robot tire gearbox: dust prevention, strong torque, low noise, achieve smooth movement in complex terrain.

### 智能家居(Smart Home)



电动窗帘传动机构：提供一种传动可靠，静音，确保机构在有电，停电的情况都能正常工作。  
Electric smart blind: provide reliable, low noise transmission part, make sure it could work properly during power cut.

## 行业案例 Business case



万向汽车(Automobile)



电子驻车牙箱工作特点/Electronic parking System :  
电机带动拉线所在内外齿轮机构,实现拉线运动实现驻车, 同时在比较复杂的环境中, 确保系统安全性, 灵敏性。  
Motor drive cord movements of transmission part to achieve parking, make sure it also work properly and safety in multiple, complex terrain.

## 舵机伺服器(Steering gear copper server)



超骏定制伺服器应用于机器人传动部件, 航模, 无人机等多项产品领域。  
Chaojun steering gear copper server applied in robot drive part, model helicopter, unmanned plane.

## 水泵医疗(Small water pump)



真空泵：超骏提供精密部件及组装服务, 确保流量和压力平稳, 没有波动

Vacuum pump: ChaoJun provide precision part and assembly service, make sure rate of flow stable and stable pressure, minimized fluctuation.